

Switch board Legend	
Symbol	Wall mounted lighting
	15 – AMP Plug point
	Main Switch Board
	5 – AMP Plug point
	Exhaust Fan
Note:- Switch board height mentioned from floor finish level.	

Note:- Overall Cabin table and workstation table Will be given Switch for 675 mm ht plug points and Switch above table at 825 mm height

Lighting fixture Legend	
Symbol	Description
	Recessed mounted down lighter
	Recessed 1.2m Led Profile light
	Recessed 1.2m Led Hanging Profile light
	Recessed Fan point
	2*2 Recessed mounted Down lighter
	Recessed-wall washer light fitting adjustable down light

Lighting fixture Legend	
Symbol	Description
	Surfaced mounted down lighter
	Surfaced mounted Led Tube light
	Surfaced Fan point
	Surfaced-wall washer light fitting adjustable down light

HVAC Legend	
Symbol	Description
	Proposed Hi wall Split ac
	Outdoor Unit

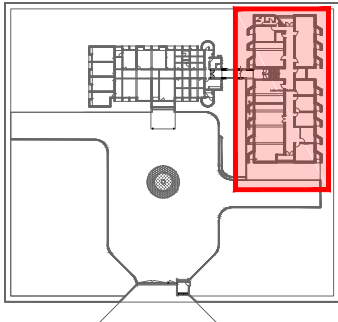
ELV Legend	
Symbol	Fixture
	CCTV
	WIFI

Ceiling material Legend	
Hatch	Material finish
	Plain gypsum board MRFR grade ceiling
	Curtain

Legend	
Hatch	Description
	Existing Wall

R2	19-05-25	SC/PR	GMDc	Tender	KBP
R1	22-02-25	SC/PR	GMDc	Tender	KBP
R0	29-02-24	SC/PR	GMDc	Tender	KBP
Rev	Date	Issued	Issued to	Issued for	Author

Key Plan:



Project: GMDc Township Development

Drawing: Electrical Layout_Ground Floor
Laboratory Building
Sheet 01 of 01

Drawing Code: 2310_INT_TD_LAB_FLC_R2

Print Size: A2 Scale: 1:70

File Title: 2310_INT_TD_LAB_FLC_R2

Project Code: MSA 2310	Project Type: INT	Location: Ambaji
Print Date: 19-May-25	Drawn By: K Parikh	Checked By: K Patel
		Approved By: M Shah

MAMTA SHAH & ASSOCIATES
Architects & Interior Designers
C-12, Chanakyapuri Society,
Chanakyapuri, Char Rasta,
New Sana Road, Baroda
Ph. No. +91 985 2712267 / 2710967
mamta@msain.com / www.msain.com

Client:



Gujarat Mineral Development Corporation